

EXPLORE THE MUSEUM

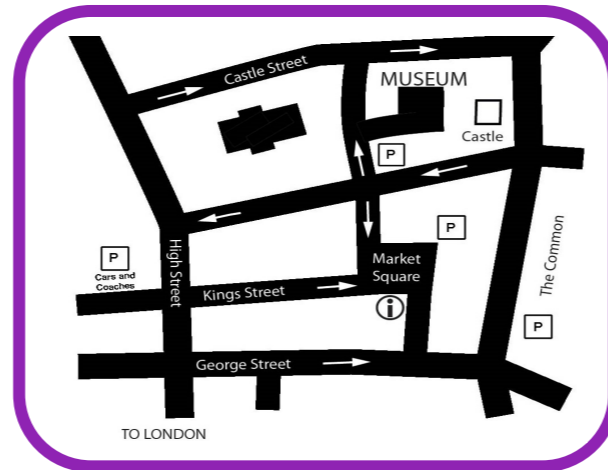
Discover a world of hidden treasures in one of the country's oldest purpose-built museums. This award-winning family friendly museum explores the archaeology, natural history and social history of north-west Essex and the wider world.

Set in quiet grounds next to the ruins of the 12th century Walden Castle, the museum is the perfect place to explore the history of our district. There is a small car park and access for disabled visitors.



Operated by Uttlesford District Council with
Saffron Walden Museum Society Ltd.
Registered Charity Number: 1123209.

WHERE TO FIND US....

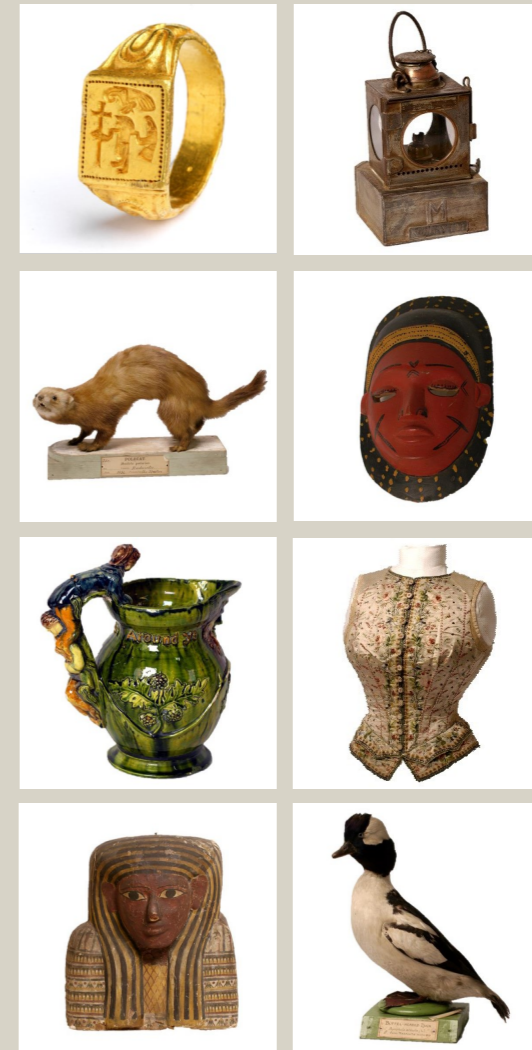


Saffron Walden Museum,
Museum Street, Saffron Walden CB10 1JL
01799 510 333
www.saffronwaldenmuseum.org
museum@uttlesford.gov.uk

Opening times:
March-October
Mondays Closed
Tuesday – Saturdays 10am-5pm;
Sundays and Bank Holidays 2pm-5pm
November-February
Mondays Closed
Tuesdays – Saturdays 10am-4.30pm
Sundays and Bank Holidays 2pm-4.30pm
Closed Christmas Eve and Christmas Day

SAFFRON WALDEN MUSEUM

EXHIBITIONS AND EVENTS



2018

ACTIVITIES, EXHIBITIONS & EVENTS

FOR MORE INFO & EXTRA EVENTS
CHECK OUR WEBSITE

www.saffronwaldenmuseum.org

Twitter: @SW_Museum

Facebook: www.facebook.com/SaffronWaldenMuseum

Instagram: @saffronwaldenmuseum

JANUARY

**From the Hazely Brick Earth:
Agriculture in North-West Essex**
27 January - 29 July



An exhibition of photographs and objects, looking at rural life and trades in north-west Essex from the past to the present.

Sponsored by RAGT Seeds & NFU Mutual.

FEBRUARY

Down on the farm

Salt Dough : Tuesday 13 (£1.50)

Pom-Pom animals : Thursday 15 (£1.50)

Long horn cow trail: both days (FREE)



An Alternative Valentine's
Wednesday 14 February

6.30pm - 8.45pm

Grown-ups only! Bar with cocktails, crafts & more.

Tickets in advance at the museum (£9)



MARCH & APRIL

Brilliant Books

Tuesday 3 April

Create a concertina book & write your own story for Children's Book Day (£1.50).

Animal stories in the natural history gallery (FREE).



Spring Day

Thursday 12 April

Create your own yarn sheep (£1.50)

Animal trail (FREE).



MAY

May Day Celebration

Saturday 5 May

Join us for a May Day celebration in the grounds (FREE) & Make a May Day garland (£1.50)



Reminiscence object handling

Tuesday 15 May

Join us for object handling for Dementia Awareness

Museums at Night

Friday 18 May

Explore the museum by torchlight!



JUNE

Wallace's Great Big Bake Off

Saturday 16 June

Take part in Wallace's baking challenge, plus craft activities. See website for details.



Fete de la Musique

Sunday 24 June, 12:00 - 8:00pm

The museum will be a venue for this musical festival

AUGUST

Worlds under Glass:

Adventures in Taxidermy

11 August to 23 September

An exhibition exploring the history of taxidermy.



Wonderful Wednesdays

Magnificent Masks: Wednesday 15 (£1.50)

Mythical Beasts: Wednesday 22 (£1.50)

Paper Taxidermy: Wednesday 29 (£1.50)

Animal colouring & stories: all three days (FREE)



SEPTEMBER

Open Heritage Weekend

15 and 16 September

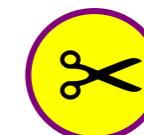
Enjoy free entry to the museum!



Roald Dahl Day

15 September

Come dressed in yellow and take part in our phizz whizzing activities.



OCTOBER

Collections Re crafted

6 October - 3 February 2019

A display of creative textiles inspired by the museum's collections by the Eastern Region Textile Forum

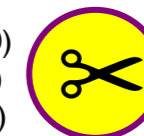


Creative Crafters

Upcycled Badge: Wednesday 24 (£1.50)

Upcycled Keyring: Thursday 25 (£1.50)

Amazing Makers trail: both days (FREE)



Museums at Night

Friday 26 October

Explore the museum by torchlight!



NOVEMBER

Schools Take-Over Day

We're giving the kids control! Follow what they've been up to on social media.

For more details visit our website.



Normal entrance fees apply unless otherwise stated