

## OPENING TIMES

### Opening times:

Mondays Closed

Tuesday – Saturday 10am-5pm (March—Oct)

10am-4.30pm (Nov—Feb)

Sundays and Bank Holidays 2pm-5pm (March—Oct)

2pm-4.30pm (Nov—Feb)

Closed Christmas Eve and Christmas Day

### Admission:

Adults £2.50; Concessions £1.25;

Under-18s free.

Within easy walking distance of the Museum, you can also visit the historic town centre, the Fry Art Gallery, Bridge End Gardens, St Mary's Parish Church, the Common and mazes. See [www.visitsaffronwalden.gov.uk](http://www.visitsaffronwalden.gov.uk) for details.



Operated by Uttlesford District Council with Saffron Walden Museum Society Ltd.  
Registered Charity Number: 1123209.



## ABOUT US

Discover a world of hidden treasures in one of the country's oldest purpose-built museums. This award-winning family friendly museum explores the archaeology, natural history and social history of north-west Essex and the wider world.

Set in quiet grounds next to the ruins of the 12th-century Walden Castle, the museum is the perfect place to explore the history of our district. There is a small car park and access for disabled visitors.

## WHERE TO FIND US

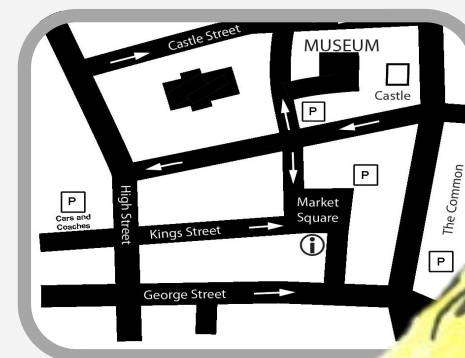
### Saffron Walden Museum,

Museum Street, Saffron Walden CB10 1JL

01799 510 333

[www.saffronwaldenmuseum.org](http://www.saffronwaldenmuseum.org)

[museum@uttlesford.gov.uk](mailto:museum@uttlesford.gov.uk)

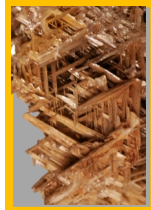
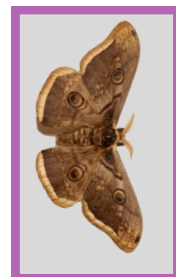
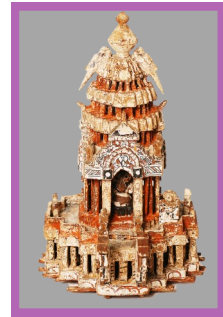


## SAFFRON WALDEN MUSEUM

## EXHIBITIONS AND EVENTS



# THINGS TO SEE AT THE MUSEUM



## ACTIVITIES, EXHIBITIONS & EVENTS

### JANUARY

#### Collections Re-crafted

6 October 2018—3 February 2019  
A display of creative textiles inspired by the museum collections, by the Eastern Regional Textile Forum.

### FEBRUARY

#### Living with History

16 February - 12 May  
An exhibition on the origins of towns and major settlements in north-west Essex.

#### Half Term Activities 18 - 24 Feb

Wed 20: Matchbox builds (£1.50)  
Thu 21: Mini Museums (£1.50)  
Fri 22: Upcycled Walden (£1.50)

### APRIL

#### Easter Holidays 8 - 22 April

Wed 10: Froggy Fingerprint cards (£1.50)  
Thu 11: Paper Butterfly Displays (£1.50)  
Wed 17: Paper plant pot sunflowers (£1.50)

### MAY

#### May Celebration: Saturday 11th

Join us for a day of May celebrations with dancing and a maypole.  
Create a Morris sling (a short baton decorated with ribbons, bells, etc) (£1.50)

## FOR MORE INFO & EXTRA EVENTS CHECK OUR WEBSITE

### Take Away the Walls

24 May - 3 November  
An exhibition for health, happiness and wildlife.

### Museums at Night: Fri 17

Join us for an evening of activities for all ages, inspired by our current exhibition.

### May Half Term: 27 May - 2 June

Wed 29: Build a bug hotel £1.50  
Thu 30: Build a birdhouse £1.50  
Fri 31: Help plant our nature gardens Free

### JUNE

#### 12th Century Live! Saturday 1 10-3.30pm

Join us as the Museum and Castle grounds are transported back in time.  
Practice military drills and have a go at firing a Ballista. Try on period costumes, experience 12th century games, crafts and cooking.  
Local history groups available to show how to research more recent family and local histories. (additional charges may apply for food & craft activities)

#### Saffron Screen at the Museum Sunday 2

### AUGUST

#### Wallace's Great Big Birthday Bakeoff

Friday 9  
Join us to celebrate Wallace's 200th birthday. Get your wooden spoon out and bake Wallace a birthday cake to enter into the competition. Food and party games on the lawn.  
Create your own party hat (£1.50)

### Wonderful Wednesdays in Summer

31 Jul: Embossed pinch pots (£1.50)  
14 Aug: Peg insects (£1.50)  
21 Aug: Paper cone animals (£1.50)  
28 Aug: Cardboard cactus (£1.50)

### SEPTEMBER

#### Open Heritage Weekend 14—15

Enjoy free entry to the Museum all weekend

#### Roald Dahl Day Sat 14

Create your own BFG ears (Free)

### OCTOBER

#### Half Term 28 Oct - 3 Nov

Wed 30 :Spooky forest mobile (£1.50)  
Thurs 31 :Ghost in a jar (£1.50)  
Fri 1 Nov: Museums at Night (£1.50)

### NOVEMBER

#### From Death masks to Diaries

November 15 - 22 March  
An exhibition exploring the many faces of portraiture.

### DECEMBER

#### Perfect Portraits 20 — 21

Come and have your photo taken with some historic props, a perfect Christmas gift!  
Make a paper Christmas wreath from your hand prints (£1.50)

[www.saffronwaldenmuseum.org](http://www.saffronwaldenmuseum.org)