

## OPENING TIMES

## ABOUT US

## WHERE TO FIND US

# SAFFRON WALDEN MUSEUM

### Opening Times:

Monday	Closed	
Tuesday-Saturday	10am - 5pm	(Mar - Sep)
	10am - 4.30pm	(Nov - Feb)
Sunday & Bank Holidays	2pm - 5pm	(Mar - Sep)
	2pm - 4.30pm	(Nov - Feb)
Christmas Eve & Christmas Day	Closed	

### Admission:

Adults	Concessions	Under-18s
£2.50	£1.25	Free

Within easy walking distance of the Museum, you can also visit the historic town centre, the Fry Art Gallery, Bridge End Gardens, St Mary's Parish Church, the Common and mazes. See [www.visitsaffronwalden.gov.uk](http://www.visitsaffronwalden.gov.uk) for details.



Operated by Uttlesford District Council with  
Saffron Walden Museum Society Ltd.  
Registered Charity Number: 1123209.



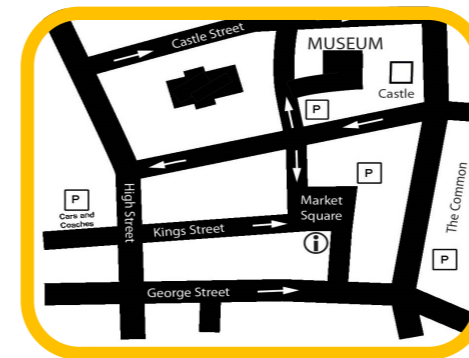
Discover a world of hidden treasures in one the country's oldest purpose-built museums. This award-winning family friendly Museum explores the archaeology, natural history and social history of north-west Essex and the wider world.

Set in quiet grounds next to the ruins of the 12th century Walden Castle, the Museum is the perfect place to explore the history of our district. There is a small car park and access for disabled visitors.



View of Saffron Walden Museum and castle c.1900s,  
unknown artist

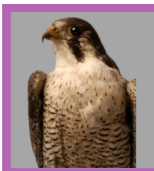
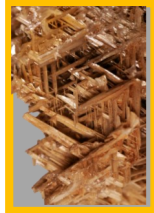
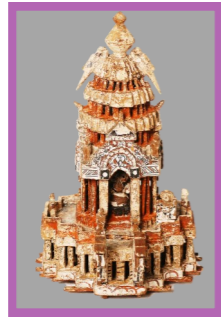
**Saffron Walden Museum,**  
Museum Street, Saffron Walden CB10 1BN  
01799 510333  
[www.saffronwaldenmuseum.org](http://www.saffronwaldenmuseum.org)  
[museum@uttlesford.gov.uk](mailto:museum@uttlesford.gov.uk)



# ALL FIRED UP!



January - June 2020



## JANUARY

### From Death Masks to Diaries 16 Nov 2019 - 22 Mar 2020

An exhibition exploring the many faces of portraiture.

- Tues 14: \*Toddler STEM 10-12noon (£2)
- Tues 28: \*Minis 10-12noon (£2)
- Tues 28: \*Grown Up's Art Club 1-3pm (£5)

## FEBRUARY

- Tues 11: \*Toddler STEM 10-12noon (£2)

Sat 15: SW Snapshots 10-12noon  
Explore a selection of the Museum's photograph and portrait collections.

### Half-Term Activities\*\*

(30 min sessions between 10.30-12.30noon or between 1.30-3.30pm)

- Wed 19: Mask Making (£1.50)
- Thurs 20: Clay Heads (£1.50)
- Fri 21: Dastardly Disguises (£1.50)

- Tues 25: \*Minis 10-12noon (£2)
- Tues 25: \*Grown Up's Art Club 1-3pm (£5)

## MARCH

Sat 7: Creative Writing 10-12noon

Develop your creative writing skills, inspired by the temporary exhibition, with *Saffron Walden Arts Trust* - details and booking online through their website.

[www.saffronwaldenartstrust.co.uk](http://www.saffronwaldenartstrust.co.uk)

## MARCH (Continued)

- Tues 10: \*Toddler STEM 10-12noon (£2)
- Sat 14: SW Rocks 10-12noon (£1.50)  
decorate a rock to hide around the town.

- Tues 17: \*Minis 10-12noon (£2)
- Tues 17: \*Grown Up's Art Club 1-3pm (£5)

## APRIL

### All Fired Up!

4 April - 5 July

The history of fire-fighting in Essex produced in partnership with Essex Fire Museum.

### Easter Holidays\*\*

(30 min sessions between 10.30-12.30noon or between 1.30-3.30pm)

- Wed 8: Easter Hats (£1.50)
- Thurs 9: Mini Firefighters (£1.50)
- Wed 15: Bird's Nests (£1.50)
- Thurs 16: Glass Painting (£1.50)

- Tues 21: \*Toddler STEM 10-12noon (£2)
- Tues 28: \*Minis 10-12noon (£2)
- Tues 28: \*Grown Up's Art Club 1-3pm (£5)

## MAY

Sat 9: Sawdust Hearts 10.30-12noon (£1.50)  
Join us to make some commemorative VE Day themed textiles

- Tues 12: \*Toddler STEM 10-12noon (£2)

Fri 15: Wildlife at Night 6-9pm (£1.50)  
Get up close and personal with live wildlife. Create a wild animal sock puppet!

## MAY Half-Term Activities\*\*

(30 min sessions between 10.30-12.30noon or between 1.30-3.30pm)

- Wed 27: Fabulous Phoenix (£1.50)
- Thurs 28: Fossils and Flints  
Bring along your finds for identification. Look at examples from the collections. Paint your own fossil. (£1.50)

Fri 29: Futures Friday 10.30-3.30pm

Help us build an environmentally sustainable future. Hands-on activities and information stalls. Craft activity. (£1.50)

## JUNE

- Sat 6: Carnival Crafts 10-12noon (£1.50)
- Tues 9: \*Toddler STEM 10-12noon (£2)
- Sat 13: Carnival Crafts 10-12noon (£1.50)
- Tues 23: \*Minis 10-12noon (£2)

### PLEASE NOTE:

\*Toddler STEM = science sessions for toddlers

\*Minis = craft sessions for toddlers

\*Grown Up's Art Club = Arts & Crafts sessions for adults

\*\*All holiday craft activities sessions are drop-in and on a first come, first served basis, unless otherwise stated. Please consult museum publicity in the run up to each event for more information.